

# Quick Installation Guide

## MOBA-STC Panel

Ship Time Control Panel



## Certification of the Producer

### STANDARDS

The Ship Time Control Panel was developed and produced in accordance with the EU Guidelines:

2006 / 95 / EG

2004 / 108 / EG

96 / 48 / EG



## References to the Instruction Manual

1. The information in this Instruction Manual can be changed at any time without notice. The current version is available for download on [www.mobatime.com](http://www.mobatime.com).
2. This Instruction Manual has been composed with the utmost care, in order to explain all details in respect of the operation of the product. Should you, nevertheless, have questions or discover errors in this Manual, please contact us.
3. We do not answer for direct or indirect damages, which could occur, when using this Manual.
4. Please read the instructions carefully and only start setting-up the product, after you have correctly understood all the information for the installation and operation.
5. The installation must only be carried out by skilled staff.
6. It is prohibited to reproduce, to store in a computer system or to transfer this publication in a way or another, even part of it. The copyright remains with all the rights with BÜRK MOBATIME GmbH, D-78026 VS-Schwenningen and MOSER-BAER AG – CH 3454 Sumiswald / SWITZERLAND.



### Installation and Handling Notice

This panel may only be transported in its original packaging and must be kept dry.

# Table of contents

---

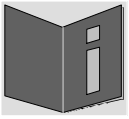
1	Safety.....	4
1.1	Safety instructions.....	4
1.2	Symbols and Signal Words used in this Instruction Manual.....	4
1.3	Observe operating safety! .....	4
1.4	Consider the installation site!.....	4
1.5	Please observe the electromagnetic compatibility!.....	4
2	Maintenance.....	5
2.1	Troubleshooting: Repairs .....	5
2.2	Cleaning .....	5
2.3	Disposing.....	5
3	General Information: Introduction .....	6
3.1	Dimensions.....	6
3.2	Function description .....	7
4	Mounting guidelines .....	8
4.1	Connections.....	8
4.2	Mounting.....	8
5	Configuration.....	9
5.1	Overview.....	9
5.2	Windows login.....	9
5.3	Network configuration.....	10
5.4	MOBA-NMS (MOBATime Network Management System) .....	10
6	Technical data.....	11

# 1 Safety

---

## 1.1 Safety instructions

---





Read this chapter and the entire instruction manual carefully and follow all instructions listed. This is your assurance for dependable operations and a long life of the device.

Keep this instruction manual in a safe place to have it handy every time you need it.

## 1.2 Symbols and Signal Words used in this Instruction Manual

---

	<b>Danger!</b> Please observe this safety message to avoid electrical shock! There is danger to life!
	<b>Caution!</b> Please observe this safety message to avoid damages to property and devices!

## 1.3 Observe operating safety!

---



**Caution!**

- Never open the housing of the device! This could cause an electric short or even a fire, which would damage your device. Do not modify your device!
- The device is not intended for use by persons (including children) with limited physical, sensory, or mental capacities or a lack of experience and/or knowledge.
- Keep packaging such as plastic films away from children. There is the risk of suffocation if misused.

## 1.4 Consider the installation site!

---



**Caution!**

- To avoid any operating problems, keep the device away from moisture and avoid dust, heat, and direct sunlight. Do not use the device outdoors.



### **Danger!**

Make sure that you wait before using the device after any transport until the device has reached the ambient air temperature. Great fluctuations in temperature or humidity may lead to moisture within the device caused by condensation, which can cause a short.

## 1.5 Please observe the electromagnetic compatibility!

---



**Caution!**

- This device complies with the requirements of the EMC and the Low-voltage Directive.

## 2 Maintenance

---

### 2.1 Troubleshooting: Repairs

---

If you cannot rectify the problems, contact your supplier from whom you have purchased the device.

Any repairs must be carried out at the manufacturer's plant.

Disconnect the power supply immediately and contact your supplier, if ...

- liquid has entered your device
- the device does not properly work and you cannot rectify this problem yourself.

### 2.2 Cleaning

---

- Please make sure that the device remains clean especially in the area of the connections, the control elements, and the display elements.
- Clean your device with a damp cloth only.
- Do not use solvents, caustic, or gaseous cleaning substances.

### 2.3 Disposing

---



#### Device

At the end of its lifecycle, do not dispose of your device in the regular household rubbish. Return your device to your supplier who will dispose of it correctly.



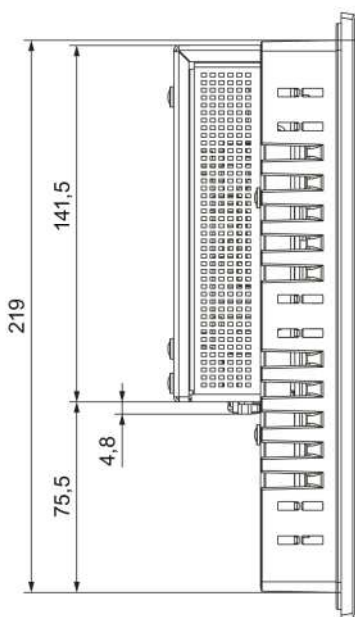
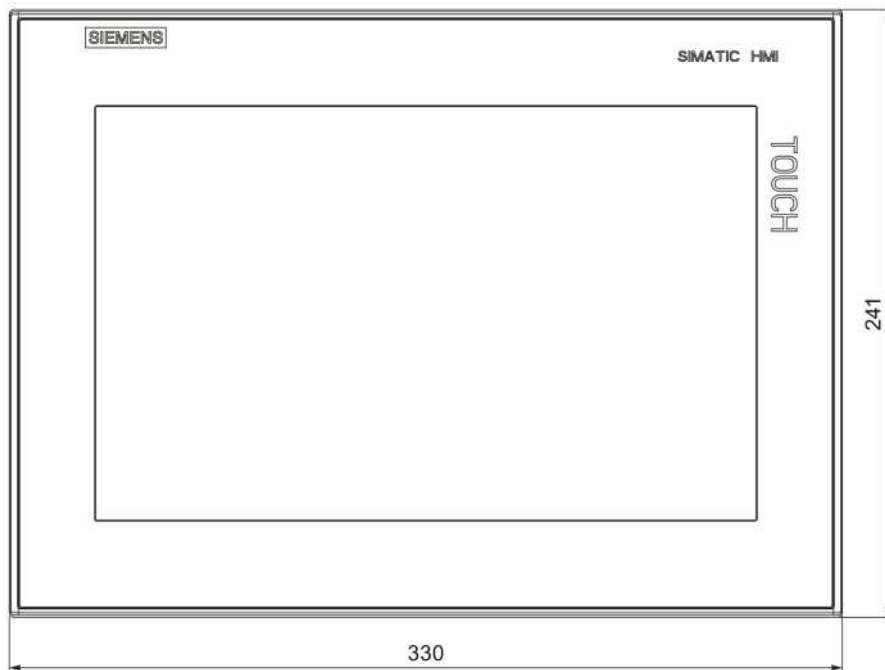
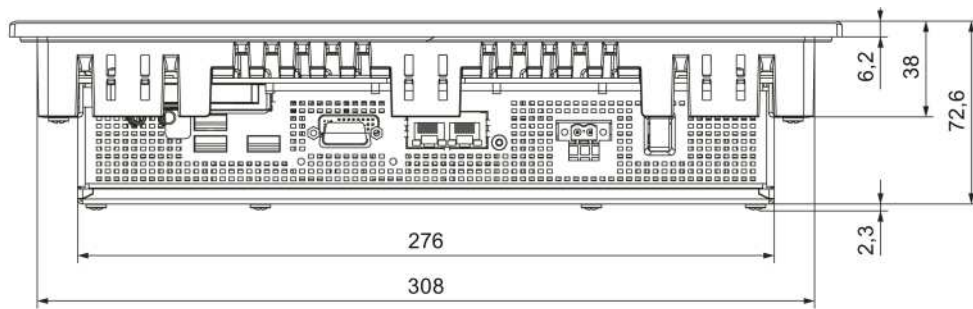
#### Packaging

Your device is packaged to protect it from damages during transport.

Packaging is made of materials that can be disposed of in an environmentally friendly manner and properly recycled.

### 3 General Information: Introduction

#### 3.1 Dimensions



All specifications in mm.

## 3.2 Function description

---

The MOBATime Ship Time Control (MOBA-STC) Panel is a touch screen operation terminal designed for ships. It provides an easy-to-use user interface for the local time adjustment of the entire ship time system. Together with MOBATime DTS / NTS devices the local time is set by simple plus / minus buttons.

Features:

### Hardware

- 12" touch display provided by SIEMENS.
- Display resolution: 1280 x 800 pixels
- Compact design.
- Full-metal enclosure with high electromagnetic compatibility.
- High resistance to vibration and shock.
- Maintenance-free operation.
- Adjustable display brightness.

### Software

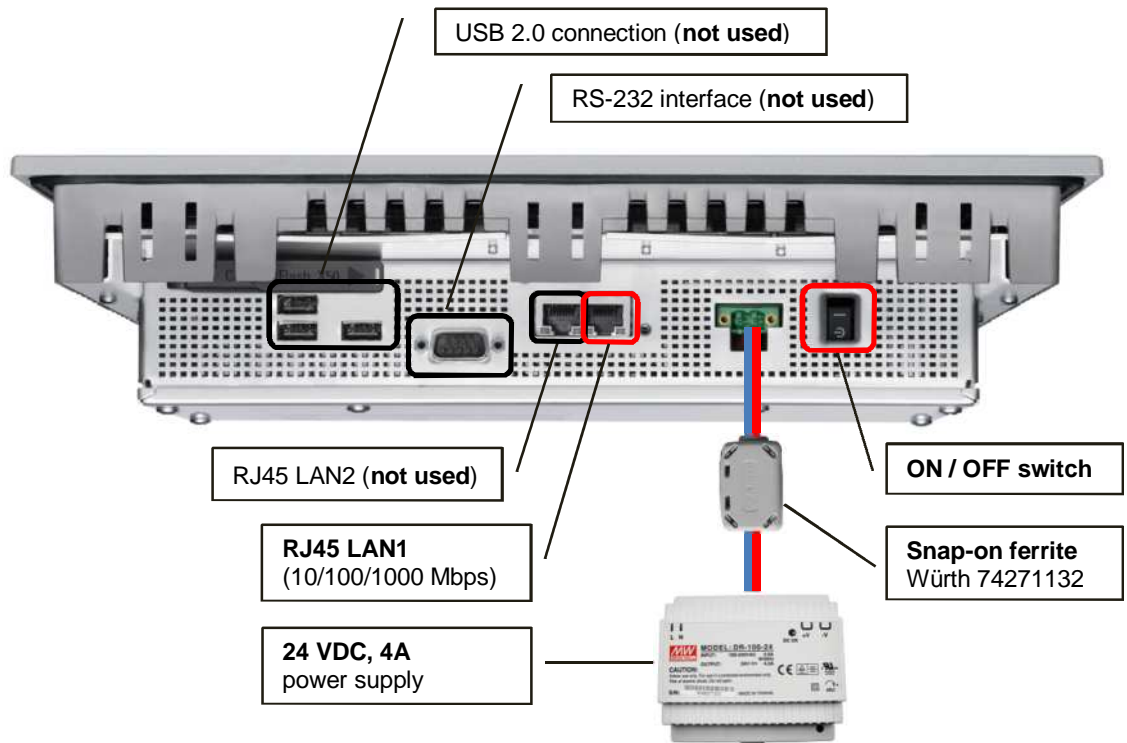
- Simple, touch screen optimized user interface for local time adjustment.
- Display of UTC and current local (ship) time.
- Remote configuration by MOBA-NMS.
- Synchronization using an NTP server in the network.
- Support for multiple DTS / NTS devices.
- Device status supervision and display.

## 4 Mounting guidelines

---

### 4.1 Connections

---



**Notice:** The *Corcom 6FC10 filter*, as described in the SIEMENS SIMATIC IPC277D Compact Operating Instructions, is not required for the operation with the 24 VDC power supply provided by MOBATime.

### 4.2 Mounting

---

Please refer to the SIEMENS SIMATIC IPC277D Compact Operating Instructions (02/2012, **A5E03409489-3**).



## 5 Configuration

### 5.1 Overview

The MOBA-STC Panel has a pre-installed Windows 7 Ultimate operating system with two system users: **stcUser1** and **stcAdmin1**.

The user **stcUser1** is used for the normal operation of the panel and configuration over MOBA-NMS; a direct Windows login or remote access (RDP) with this user is not possible.

User **stcAdmin1** is used to get direct or remote access (RDP) to the Windows operating system for configuration purposes.

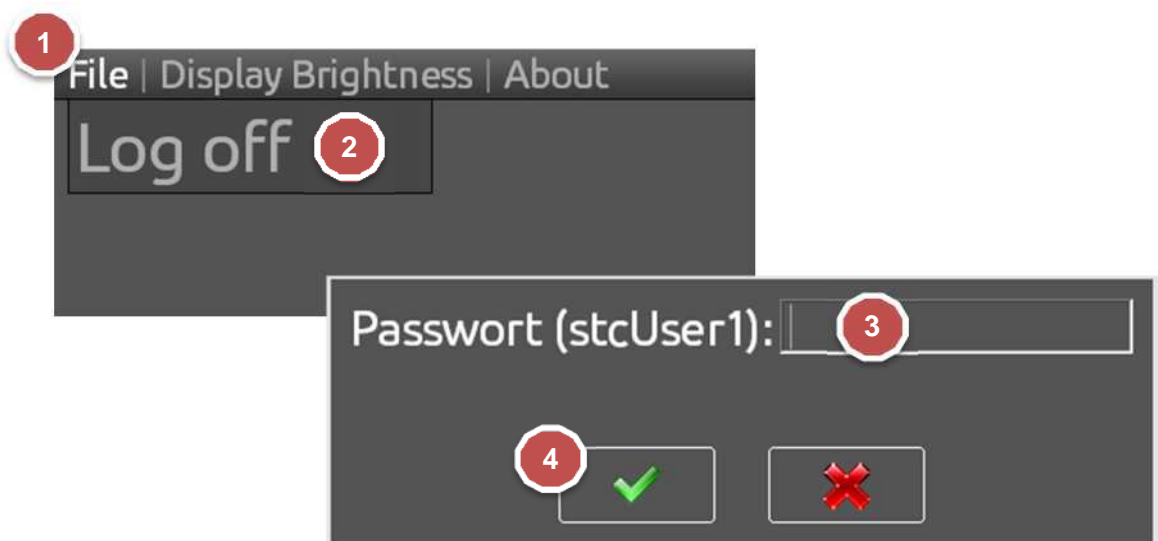
User overview:

Function \ User	stcUser1	stcAdmin1
Local Windows login (Auto start of the MOBA-STC application)	-	x
Remote Windows login (RDP)	-	X
Configuration with MOBA-NMS	X	-
Default password for Windows login	-	mobatime
Default password for configuration with MOBA-NMS	mobatime	-

- = Not available  
x = Available

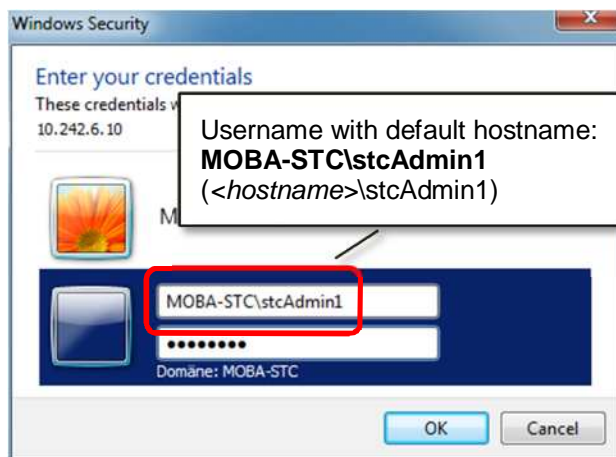
### 5.2 Windows login

The Windows is configured to automatically login with the user **stcUser1** and start the MOBA-STC application. To get to the Windows login screen select the menu entry "*File* → *Log off*" and type in the password for the user **stcUser1** (same password as used for the configuration with MOBA-NMS):



It is also possible to connect to the panel by Microsoft Remote Desktop Protocol (RDP).

The remote login is only possible with the user **stcAdmin1**. If the panel is in normal operation mode (MOBA-STC application running) the remote login can take up to 30 seconds because the user stcUser1 has to be logged out first.



**Attention:** The panel operation is halted while a remote session is active! The Windows operating system has to be restarted to resume normal operation!

### 5.3 Network configuration

---

By default, the MOBA-STC Panel has the following network configuration:

IP address: *No default IP. DHCP enabled.*

Hostname: **MOBA-STC**

Workgroup: **WORKGROUP**

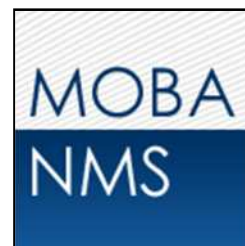
To change the network parameters, login directly or by remote access (RDP) with the user **stcAdmin1** to Windows and change the corresponding settings. See chapter “5.2 *Windows login*” for more details about the local / remote Windows login.

### 5.4 MOBA-NMS (MOBATime Network Management System)

---

MOBA-NMS is a Java-based PC program used for configuration and status requests of NTP clocks, network time servers and MOBA-STC panels. This software allows for all configurations for one or several devices to be carried out centrally.

Further information, manuals and the software itself can be found on our website <http://www.mobatime.com>. If desired, it can also be sent out on a USB stick (must be ordered separately).



## 6 Technical data

---

### Software

Synchronization	Network Time Protocol (NTP), UTC	
Operation	MOBA-NMS	
Network ports	NTP:	123
	Time Zone Server:	65534
	MOBA-NMS:	8081, 8082 and 8083

### Hardware

Panel type	12", SIEMENS SIMATIC IPC277D
Power supply	DC 24V == 4A
Weight	2750 g
Degree of protection	IP 20 to IEC 60529
Quality assurance	In accordance with ISO 9001

Please refer to the SIEMENS SIMATIC IPC277D Compact Operating Instructions (02/2012, **A5E03409489-3**) for more hardware related specifications.

### HEADQUARTERS / PRODUCTION

MOSER-BAER AG  
Spitalstrasse 7, CH-3454 Sumiswald  
Tel. +41 34 432 46 46 / Fax +41 34 432 46 99  
moserbaer@mobatime.com / www.mobatime.com

### SALES WORLDWIDE

MOSER-BAER SA EXPORT DIVISION  
19 ch. du Champ-des-Filles, CH-1228 Plan-les-Ouates  
Tel. +41 22 884 96 11 / Fax + 41 22 884 96 90  
export@mobatime.com / www.mobatime.com

### SALES SWITZERLAND

MOBATIME AG  
Stettbachstrasse 5, CH-8600 Dübendorf  
Tel. +41 44 802 75 75 / Fax +41 44 802 75 65  
info-d@mobatime.ch / www.mobatime.ch

MOBATIME SA  
En Budron H 20, CH-1052 Le Mont-sur-Lausanne  
Tél. +41 21 654 33 50 / Fax +41 21 654 33 69  
info-f@mobatime.ch / www.mobatime.ch

### SALES GERMANY, AUSTRIA

BÜRK MOBATIME GmbH  
Postfach 3760, D-78026 VS-Schwenningen  
Steinkirchring 46, D-78056 VS-Schwenningen  
Tel. +49 7720 8535 0 / Fax +49 7720 8535 11  
buerk@buerk-mobatime.de / www.buerk-mobatime.de

